




TECHNICAL DATA AND INFORMATION

MHL380D

SCRAP-HANDLING AND PORT MACHINE



-  366 hp
-  145,505 - 147,710 lbs
-  up to 68.9 ft



TECHNICAL DATA MHL380 D



OPERATING WEIGHT

145,505 - 147,710 lbs



DIESEL ENGINE

MANUFACTURER AND MODEL	Deutz TCD 2015 V06 4V
DESIGN	6-cylinder V-engine
ENGINE CONTROL	EMR III
TYPE	4-stroke diesel, direct common rail fuel injection, turbocharged with intercooling
ENGINE OUTPUT	366 hp
NOMINAL SPEED	1800 rpm
DISPLACEMENT	726.8 in ³
COOLING SYSTEM	Liquid intercooling with temperature-controlled fan speed
EMISSION STANDARDS	EPA Tier III and COM III
AIR FILTER DESIGN	Two-stage filter
FUEL TANK CAPACITY	230 US gal



ELECTRICAL SYSTEMS

OPERATING VOLTAGE	24 V
BATTERIES	2 x 12 V / 143 Ah / 950 A (in accordance with EN)
LIGHTING SET	1 x H3 spotlight on upper carriage, 1 x H3 spotlight on cabin floor, turn signal and rear side-marker lamps
GENERATOR	30 kW DC generator with control, driven by V-belt direct from diesel engine



TRAVEL DRIVE

Hydrostatic drive through infinitely variable axial piston motor and directly mounted travel brake valves, flanged to a single-stage transfer gear-box, 4-wheel drive

TRAVEL SPEED, 1st GEAR	Continuously variable 0 - 5 mph
GRADEABILITY	max. 11%
TURNING RADIUS	32.5 ft



SWING SYSTEM

RING GEAR	Internally toothed ball ring gear (double row)
DRIVE	Two-stage planetary gear with integrated multi-disc brake, closed circuit
UPPER CARRIAGE SWING SPEED	Infinitely variable from 0 - 6 rpm
PIVOT BRAKE	Electrically operated



UNDERCARRIAGE

FRONT AXLE	Planetary drive axle with integrated drum brake, rigidly mounted, max. steering angle: 30°
REAR AXLE	Oscillating planetary drive rear axle with integrated drum brake and selectable oscillating axle lock
STABILIZERS	4-point stabilizers
TIRES	Solid rubber, elastic, 8-fold 14.00 - 24



BRAKE SYSTEM

SERVICE BRAKE	Hydraulic single-circuit braking system acting on all four wheel pairs
PARKING BRAKE	Electrically operated disc brake at transmission, acting on both front and rear axles

HYDRAULIC SYSTEM

REXROTH mobile hydraulic system with load limit control and fuel-saving power-demand control, closed swing circuit. Separate oil cooler, temperature-controlled fan speed. Hydraulic oil filter: filter elements integrated in the oil tank; maintenance interval: up to 3,000 operating hours. Central lubrication system

MAX. PUMP CAPACITY	169.1 US gal/min + 52.8 US gal/min in swing circuit
MAX. OPERATING PRESSURE	4,641 / 5,221 psi
HYDRAULIC OIL TANK	182 US gal

OPERATOR'S CAB

Cab: Elastically supported, infinitely variable hydraulically height-adjustable with max. eye level of 20.3 ft and independently horizontally adjustable by up to 7.2 ft. Large windows for optimum all-around view, windshield with pull-down sunblind that slides under cab roof, visibility panel in cab roof, sliding window in cab door, steering column height and tilt adjustable

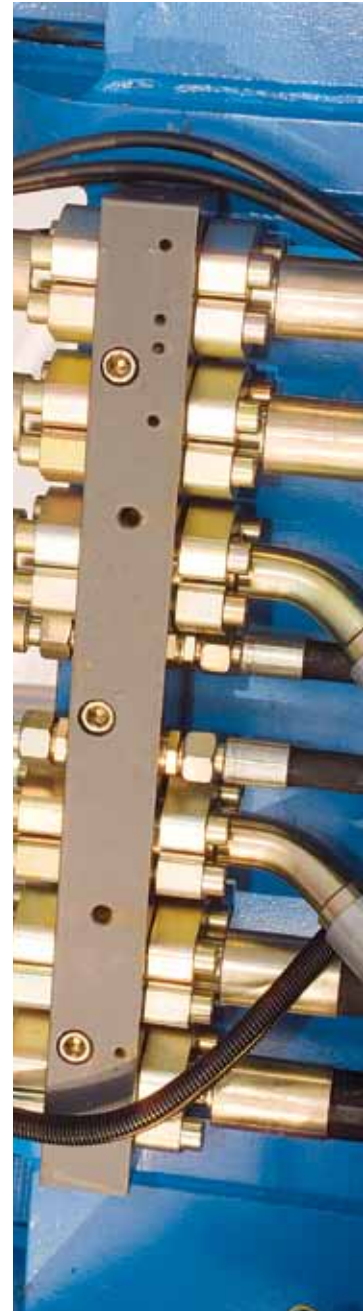
HEATING	Infinitely variable hot water heating with 3-speed fan, 4 adjustable defroster nozzles
OPERATOR'S SEAT	Air-cushioned comfort-seat with integrated headrest, safety belt and lumbar support, seat heating with integrated a/c function optional. Seat position, seat inclination and position of seat relative to armrests and pilot control units are multi-adjustable, allowing low fatigue operation
MONITORING	Ergonomic, anti-glare instrument layout; function monitor; automatic monitoring, warning, and storage of deviating operating conditions, e.g. filter pressure monitoring with warning indicator and shutdown of pilot controls; warning and shutdown of pilot controls if hydraulic oil temperature limits are exceeded
AIR CONDITIONING	Automatic
SOUND POWER LEVEL	(guaranteed) in accordance with guideline 2000/14 EC $L_{W(A)} = 106 \text{ dB (A)}$

SAFETY INSTALLATIONS

For crane operations in accordance with EN 474-5
Cab protection by close proximity range limiter


OFFICIAL HOMOLOGATION


Certification in accordance with CE regulations




EQUIPMENT MHL380 D




 ENGINE	SERIES	OPTION
Exhaust gas turbocharger	●	
Charge air cooling	●	
Electronic direct injection	●	
Automatic idle	●	
Engine diagnosis interface	●	
Temperature-controlled fan drive	●	

 CHASSIS	SERIES	OPTION
4-point stabilizers	●	
4-point stabilizers, individually controllable		●
Stabilizer cylinders with integrated two-way check valves	●	
All-wheel drive	●	
Piston rod protection on stabilizer cylinders	●	
Stabilizer plates 26.2 x 20.1 in	●	
Extra-large stabilizer plates 42.1 x 31.5 in		●
Rear axle oscillating lock	●	
Special paint		●
Drum brakes	●	
Tool box	●	

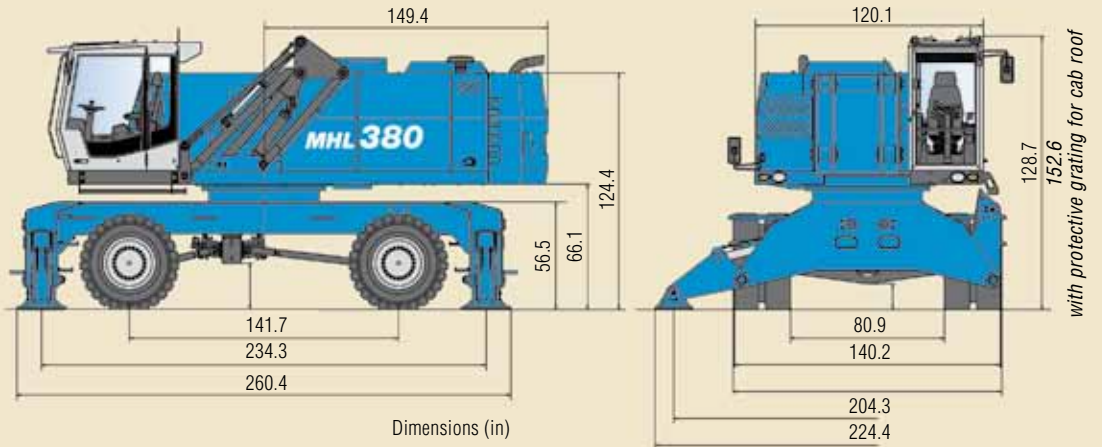
 UPPER CARRIAGE	SERIES	OPTION
Electric refuelling pump		●
Lighting protection		●
Maintenance hood, actuated by gas strut, with mechanical locking device	●	
Lockable cleaning access openings on radiators	●	
Separate radiator system for ambient temperatures up to 122° F (50° C)	●	
Separate oil cooler with temperature-controlled fan drive	●	
Automatic central lubrication system	●	
Special paint		●
Quick-drain valve for fuel tank (supplied in tool box)	●	
Quick-drain valve on hydraulic oil tank	●	
Quick-drain valve on radiator	●	
Quick-drain valve on engine oil-pan	●	

 CAB	SERIES	OPTION
Lift-up skylight in cab roof	●	
Air cushioned operator's seat with headrest, safety belt and lumbar support	●	
FOPS protective grating (roof)		●
Front/roof protective grating		●
Hinged front windshield	●	
LEXAN front window glass		●
High strength glass, front and top		●
Cab system horizontally and vertically adjustable	●	
Air conditioning	●	
Steering column, height and tilt adjustable	●	
Multi-function color display	●	
Lower windscreen wiper	●	
Fire extinguisher, dry powder		●
Radio / CD player	●	
Rotating beacon	●	
Sliding window in cab door	●	
Safety glass	●	
Seat heating with integrated a/c function		●
Windscreen washer system	●	

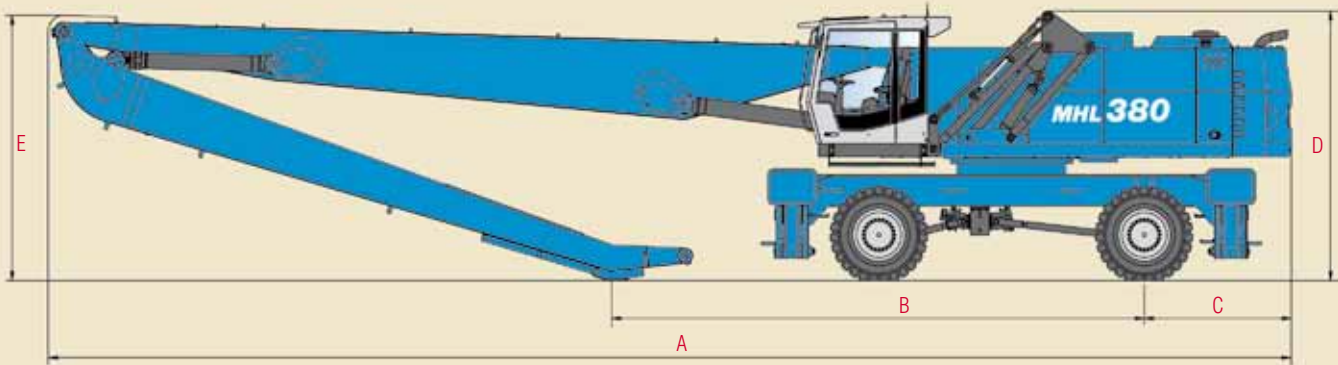
 LOWER CARRIAGE	SERIES	OPTION
Floodlights attached to cab floor	●	
Floodlights, mounted to superstructure	●	
Floodlight, mounted		●
Close proximity range limiter for stick	●	
Coolant and hydraulic oil level monitoring system	●	
Hose rupture protection for lift cylinder	●	
Hose rupture protection for stick cylinder	●	
Stick shock protection	●	
Lubrication of the grab suspension by central lubrication system	●	
Overload protection / shutdown		●
XENON floodlight on stick		●
XENON floodlight on superstructure		●
XENON floodlight on cab roof		●
Ball-valve coupling		●
Filter system for attachments		●

DIMENSIONS

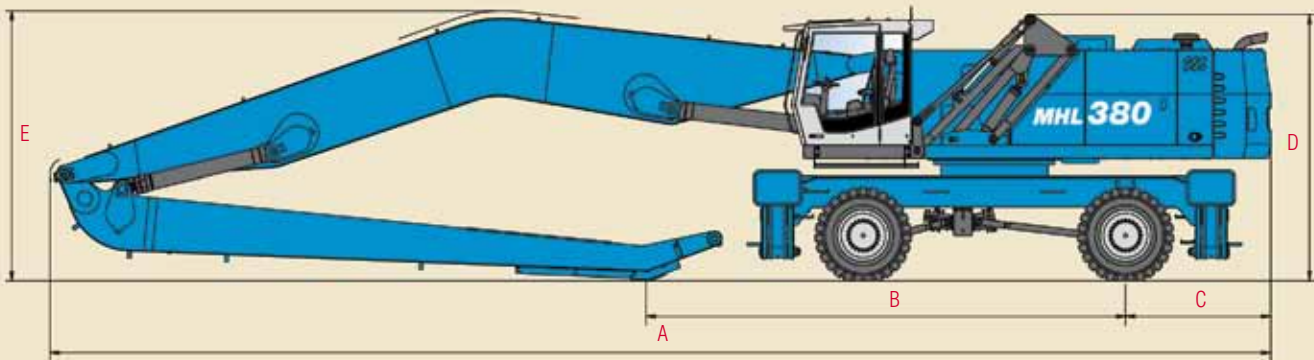
MHL380 D



MHL380 D Transport dimensions with stick



MHL380 D Transport dimensions with cranked boom



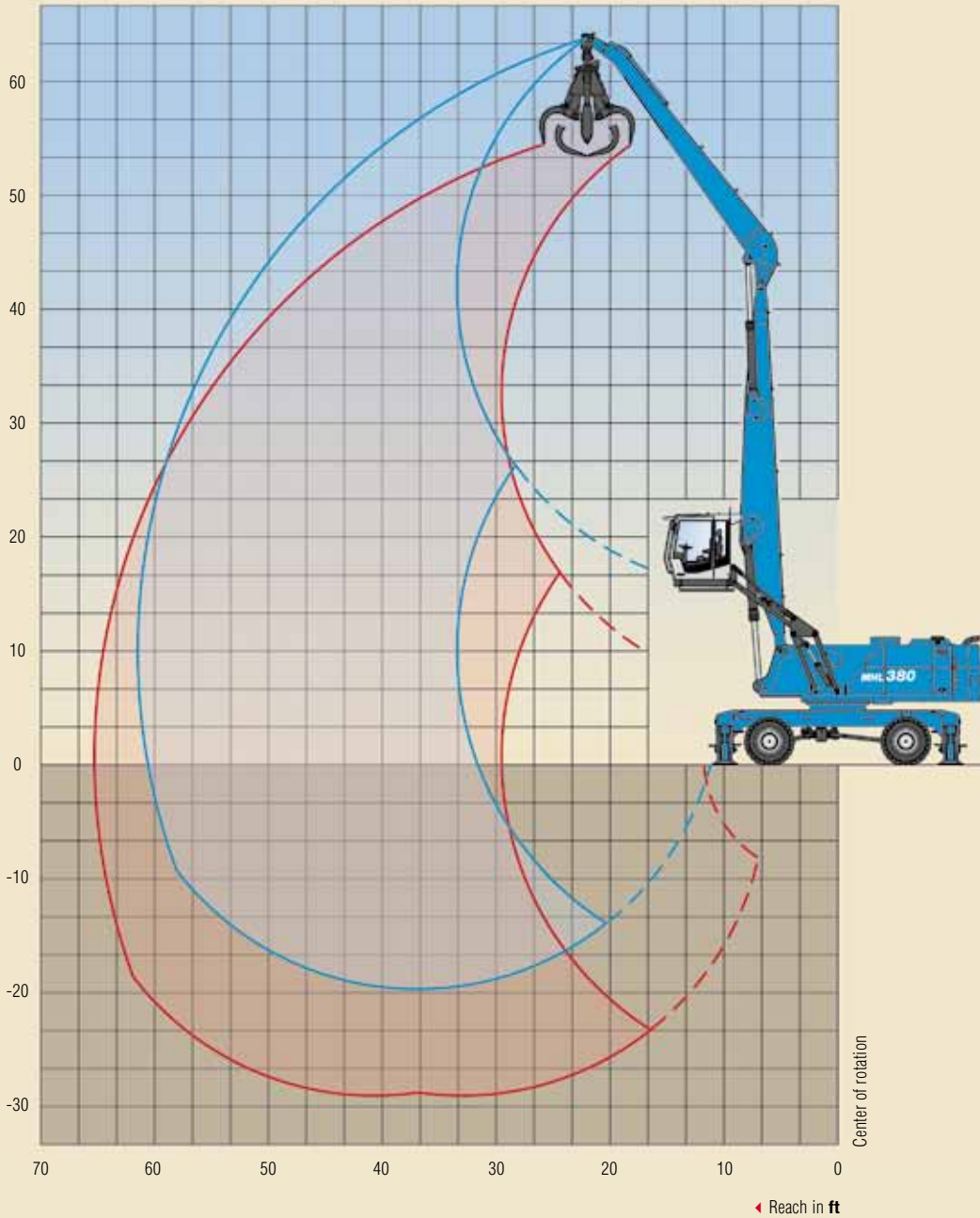
DIMENSIONS	REACH 60.7 ft	REACH 68.9 ft	REACH 68.9 ft (CRANKED)
A	595.3 in	664.0 in	656.3 in
B	250.6 in	284.4 in	259.1 in
C	78.5 in	78.5 in	78.5 in
D	143.9 in / *152.6 in	143.9 in / *152.6 in	143.9 in / *152.6 in
E	128.7 in	141.7 in	145.7 in

* with protective grating for cab roof

WORKING RANGES/LIFTING CAPACITIES MHL380 D

**Reach 60.7 ft
with stick**

Work equipment:
Box-type boom 31.5 ft;
Stick 26.2 ft;
Cactus grab



HEIGHT ft	UNDERCARRIAGE STABILIZERS	REACH ft								
		20	25	30	35	40	45	50	55	60
60	non supported			(20,640*)						
	4-pt. supported			20,640* (20,640*)						
55	non supported				(22,220*)					
	4-pt. supported				22,220* (22,220*)					
50	non supported				(26,000)	(20,640)				
	4-pt. supported				26,820* (26,820*)	22,200* (22,200*)				
45	non supported				(26,170*)	(20,990)	(16,970)			
	4-pt. supported				26,170* (26,170*)	24,570* (24,570*)	21,210* (21,210*)			
40	non supported				(26,090*)	(21,060)	(17,120)	(14,040)		
	4-pt. supported				26,090* (26,090*)	24,430* (24,430*)	23,010* (23,010*)	18,960* (18,960*)		
35	non supported				(26,120)	(20,910)	(17,060)	(14,080)	(11,650)	
	4-pt. supported				26,560* (26,560*)	24,700* (24,700*)	23,110* (23,110*)	21,530* (21,530*)	14,410* (14,410*)	
30	non supported				(25,620)	(20,560)	(16,830)	(13,970)	(11,670)	
	4-pt. supported				27,530* (27,530*)	25,340* (25,340*)	23,490* (23,490*)	21,410 (21,890*)	18,180 (19,250*)	
25	non supported			(31,850)	(24,880)	(20,040)	(16,480)	(13,740)	(11,560)	
	4-pt. supported			32,310* (32,310*)	28,960* (28,960*)	26,280* (26,280*)	24,080* (24,080*)	21,170 (22,210*)	18,070 (20,540*)	
20	non supported		(40,510)	(30,420)	(23,910)	(19,360)	(16,010)	(13,430)	(11,380)	(9,690)
	4-pt. supported		41,140* (41,140*)	35,080* (35,080*)	30,720* (30,720*)	27,410* (27,410*)	24,630* (24,630*)	20,840 (22,620*)	17,870 (20,710*)	14,460* (14,460*)
15	non supported	(53,150)	(37,730)	(28,710)	(22,780)	(18,600)	(15,480)	(13,070)	(11,150)	(9,580)
	4-pt. supported	59,970* (59,970*)	46,330* (46,330*)	38,120* (38,120*)	32,610* (32,610*)	28,600* (28,600*)	24,060 (25,520*)	20,460 (23,020*)	17,630 (20,850*)	15,350 (16,830*)
10	non supported	(47,690)	(34,800)	(26,920)	(21,620)	(17,810)	(14,940)	(12,700)	(10,910)	(9,450)
	4-pt. supported	68,970* (68,970*)	51,130* (51,130*)	40,940* (40,940*)	34,070* (34,070*)	27,950 (29,680*)	23,480 (26,160*)	20,060 (23,330*)	17,380 (20,740*)	15,210 (18,120*)
5	non supported	(32,110*)	(32,300)	(25,320)	(20,550)	(17,070)	(14,420)	(12,350)	(10,680)	(9,340)
	4-pt. supported	32,110* (32,110*)	54,090* (54,090*)	41,150 (42,980*)	32,890 (35,620*)	27,150 (30,450*)	22,920 (26,560*)	19,690 (23,430*)	17,140 (20,490*)	15,090 (17,890*)
0	non supported	(25,040*)	(30,570)	(24,090)	(19,670)	(16,450)	(13,980)	(12,050)	(10,500)	(9,260)
	4-pt. supported	25,040* (25,040*)	52,080 (54,310*)	39,760 (43,810*)	31,930 (36,170*)	26,470 (30,710*)	22,450 (26,570*)	19,370 (23,200*)	16,940 (20,200*)	15,010 (16,630*)
-5	non supported	(24,830*)	(29,570)	(23,270)	(19,040)	(15,980)	(13,650)	(11,830)	(10,380)	
	4-pt. supported	24,830* (24,830*)	43,720* (43,720*)	38,840 (43,240*)	31,230 (35,780*)	25,970 (30,300*)	22,100 (26,040*)	19,130 (22,480*)	16,810 (19,160*)	
-10	non supported	(26,510*)	(29,150)	(22,840)	(18,670)	(15,690)	(13,450)	(11,710)	(10,360)	
	4-pt. supported	26,510* (26,510*)	41,360* (41,360*)	38,350 (41,200*)	30,830 (34,320*)	25,660 (29,050*)	21,880 (24,790*)	19,010 (21,080*)	16,790 (17,330*)	
-15	non supported		(29,140)	(22,720)	(18,540)	(15,590)	(13,400)	(11,730)		
	4-pt. supported		42,020* (42,020*)	37,640* (37,640*)	30,680 (31,630*)	25,550 (26,760*)	21,820 (22,600*)	18,690* (18,690*)		

RECOMMENDED ATTACHMENTS

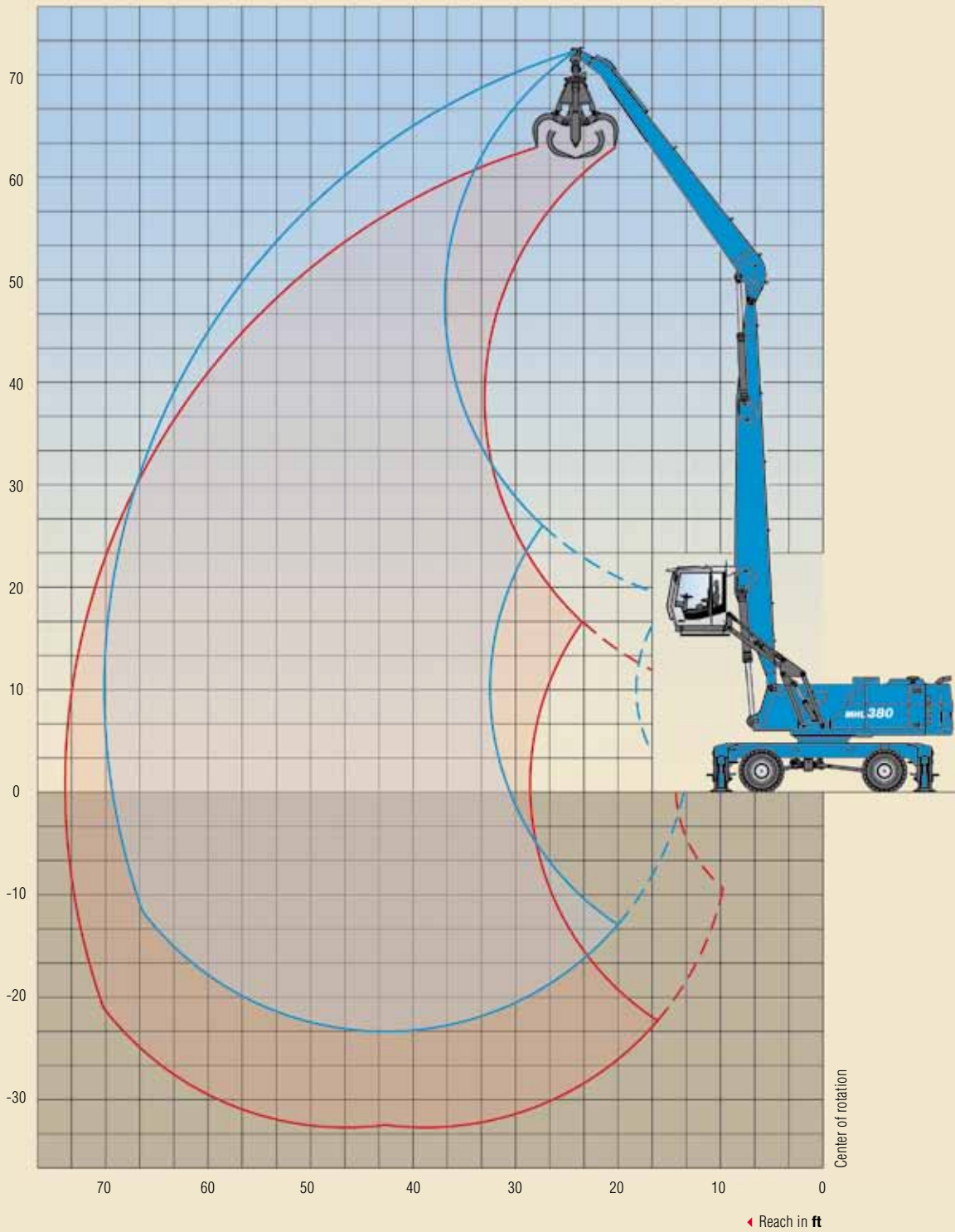
LIFT HOOK	44,092 lbs
TEREX® FUCHS CACTUS GRAB 1.0 yd³	Open or half-closed tines
TEREX® FUCHS CACTUS GRAB 1.3 yd³	Open or half-closed tines
TEREX® FUCHS CACTUS GRAB 1.6 yd³	Open or half-closed tines
TEREX® FUCHS CACTUS GRAB 1.8 yd³	Open or half-closed tines
CLAMSHELL GRAB 1.8 yd³	Loose goods density up to 5,225 lb/yd³
CLAMSHELL GRAB 2.1 yd³	Loose goods density up to 4,382 lb/yd³
CLAMSHELL GRAB 2.1 yd³	Loose goods density up to 3,203 lb/yd³

Capacity values are stated in (lbs). The pump pressure is 5,221 psi. The values, in accordance with ISO 10567, amount to 75% of the static tipping load or 87% of the hydraulic lifting force (marked *). They apply to slewing operations through 360° on a firm and level surface. Values in brackets apply to the longitudinal direction of the undercarriage. “Non-supported” values only apply when the load is hoisted above the front or rear axle. The weight of the attached hoisting equipment (grab, magnet, coupler, lift hook etc.) must be deducted from the capacity values. In accordance with CE guidelines, hose-rupture protection valves on the lift cylinders and an overload warning device are required for crane operations.

WORKING RANGES/LIFTING CAPACITIES MHL380 D

**Reach 68.9 ft
with stick**

Work equipment:
Box-type boom 37.2 ft;
Stick 29.3 ft;
Cactus grab



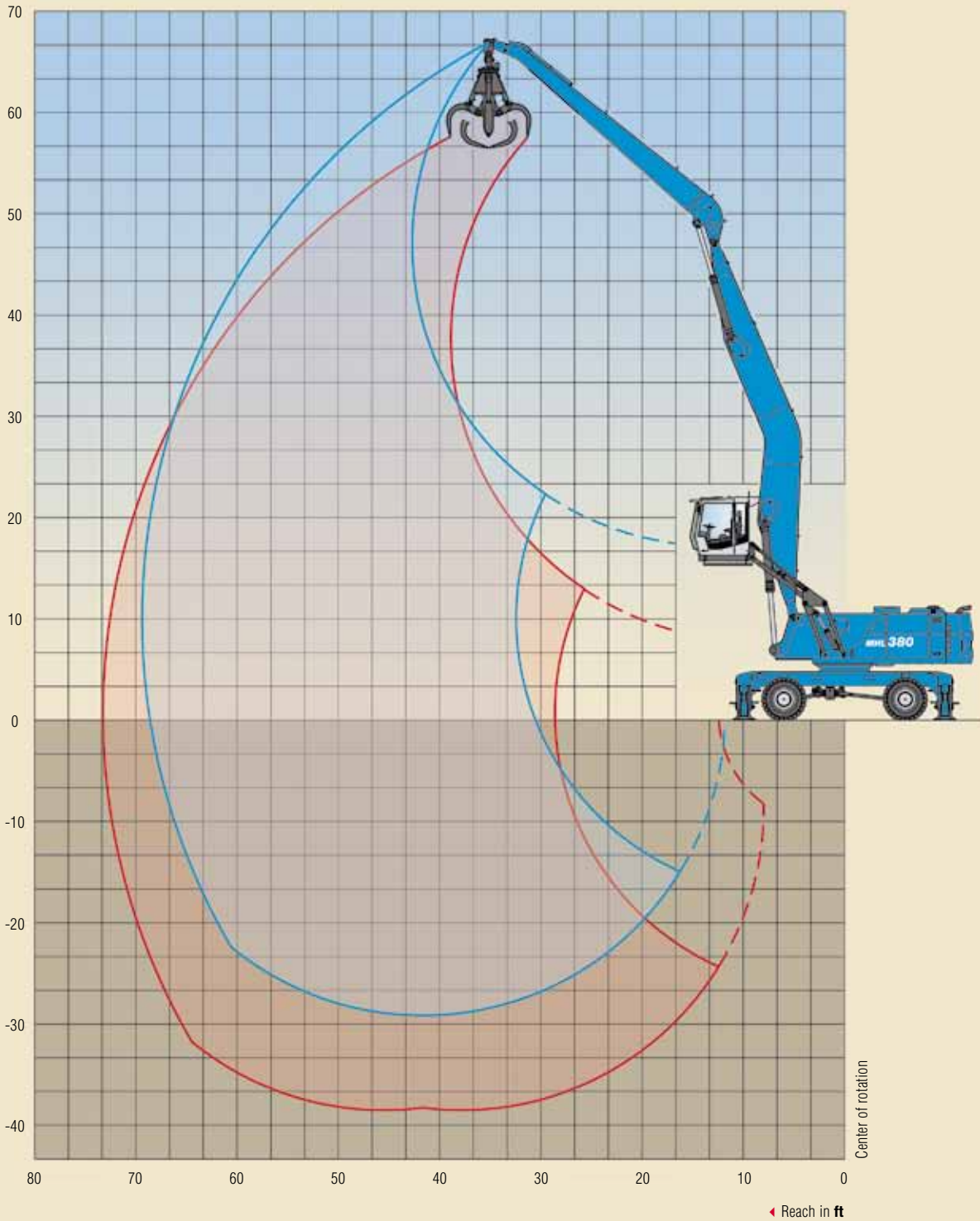
HEIGHT ft	UNDERCARRIAGE STABILIZERS	REACH ft											
		20	25	30	35	40	45	50	55	60	65	70	
65	non supported				(22,640*)								
	4-pt. supported				22,640* (22,640*)								
60	non supported				(24,940*)	(20,770*)	(16,550*)						
	4-pt. supported				24,940* (24,940*)	22,880* (22,880*)	17,650* (17,650*)						
55	non supported					(21,280*)	(17,130)	(13,830)					
	4-pt. supported					22,220* (22,220*)	20,660* (20,660*)	17,350* (17,350*)					
50	non supported					(21,500*)	(17,780)	(14,160)	(11,520)				
	4-pt. supported					21,910* (21,910*)	20,350* (20,350*)	19,050* (19,050*)	15,800* (15,800*)				
45	non supported					(21,500*)	(17,420)	(14,260)	(11,720)				
	4-pt. supported					21,910* (21,910*)	20,300* (20,300*)	18,940* (18,940*)	17,760* (17,760*)				
40	non supported					(21,290*)	(17,270)	(14,190)	(11,740)	(9,700)			
	4-pt. supported					22,190* (22,190*)	20,470* (20,470*)	19,010* (19,010*)	17,750* (17,750*)	15,540* (16,620*)			
35	non supported				(25,040*)	(20,870)	(16,970)	(13,980)	(11,620)	(9,680)	(8,010)		
	4-pt. supported				25,040* (25,040*)	22,730* (22,730*)	20,840* (20,840*)	19,240* (19,240*)	17,860* (17,860*)	15,520* (16,630*)	12,580* (12,580*)		
30	non supported				(25,340*)	(20,250)	(16,510)	(13,660)	(11,400)	(9,560)	(8,000)		
	4-pt. supported				26,160* (26,160*)	23,510* (23,510*)	21,370* (21,370*)	19,580* (19,580*)	17,960* (18,060*)	15,390 (16,720*)	13,240 (15,440*)		
25	non supported			(31,120*)	(24,230)	(19,440)	(15,920)	(13,230)	(11,100)	(9,360)	(7,910)		
	4-pt. supported			31,670* (31,670*)	27,580* (27,580*)	24,470* (24,470*)	22,010* (22,010*)	20,010* (20,010*)	17,640* (18,320*)	15,180 (16,840*)	13,140 (15,460*)		
20	non supported	(53,120*)	(38,770)	(29,130)	(22,870)	(18,480)	(15,230)	(12,730)	(10,740)	(9,120)	(7,760)		
	4-pt. supported	53,120* (53,120*)	41,440* (41,440*)	34,170* (34,170*)	29,180* (29,180*)	25,520* (25,520*)	22,710* (22,710*)	20,170* (20,170*)	17,270 (18,600*)	14,920 (16,970*)	12,990 (15,470*)		
15	non supported	(48,700*)	(35,090)	(26,870)	(21,380)	(17,440)	(14,490)	(12,190)	(10,350)	(8,840)	(7,580)		
	4-pt. supported	61,290* (61,290*)	45,740* (45,740*)	36,700* (36,700*)	30,770* (30,770*)	26,560* (26,560*)	23,090* (23,090*)	19,600* (20,890*)	16,860 (18,840*)	14,640 (17,070*)	12,800 (15,430*)		
10	non supported	(23,880*)	(31,470)	(24,630)	(19,890)	(16,400)	(13,750)	(11,650)	(9,960)	(8,570)	(7,400)	(6,420)	
	4-pt. supported	23,880* (23,880*)	49,200* (49,200*)	38,830* (38,830*)	32,130* (32,130*)	26,530* (27,440*)	22,290* (23,950*)	19,020 (21,230*)	16,440 (19,000*)	14,340 (17,080*)	12,610 (15,280*)	11,170* (13,260*)	
5	non supported	(14,400*)	(28,620)	(22,720)	(18,550)	(15,450)	(13,050)	(11,140)	(9,590)	(8,300)	(7,230)		
	4-pt. supported	14,400* (14,400*)	35,810* (35,810*)	38,370* (40,120*)	30,820* (33,020*)	25,500 (28,020*)	21,540 (24,300*)	18,480 (21,390*)	16,050 (19,020*)	14,070 (16,960*)	12,440 (15,020*)		
0	non supported	(13,690*)	(26,400*)	(21,300)	(17,490)	(14,660)	(12,460)	(10,700)	(9,270)	(8,080)	(7,090)		
	4-pt. supported	13,690* (13,690*)	26,400* (26,400*)	36,770 (40,330*)	29,640 (33,260*)	24,630 (28,170*)	20,900 (24,340*)	18,010 (21,320*)	15,710 (18,820*)	13,830 (16,630*)	12,290 (14,520*)		
-5	non supported	(15,060*)	(24,390*)	(20,370)	(16,720)	(14,050)	(11,990)	(10,350)	(9,010)	(7,910)	(7,000)		
	4-pt. supported	15,060* (15,060*)	24,390* (24,390*)	35,740 (39,430*)	28,800 (32,750*)	23,980 (27,800*)	20,400 (23,980*)	17,640 (20,920*)	15,440 (18,350*)	13,650 (16,040*)	12,190 (13,710*)		
-10	non supported	(17,090*)	(24,740*)	(19,870)	(16,250)	(13,640)	(11,660)	(10,100)	(8,840)	(7,810)	(6,980)		
	4-pt. supported	17,090* (17,090*)	24,740* (24,740*)	35,170* (37,460*)	28,280 (31,460*)	23,540 (26,830*)	20,050 (23,150*)	17,370 (20,120*)	15,250 (17,500*)	13,550 (15,060*)	12,170* (12,170*)		
-15	non supported		(25,380*)	(19,700)	(16,030)	(13,430)	(11,490)	(9,970)	(8,760)	(7,790)			
	4-pt. supported		26,060* (26,060*)	34,480* (34,480*)	28,040* (29,340*)	23,310* (25,180*)	19,860 (21,750*)	17,240 (18,810*)	15,170* (16,160*)	13,530* (13,530*)			
-20	non supported			(19,790)	(16,030)	(13,400)	(11,460)	(9,970)	(8,800)				
	4-pt. supported			30,480* (30,480*)	26,350* (26,350*)	22,780* (22,780*)	19,670* (19,670*)	16,870* (16,870*)	14,170* (14,170*)				

RECOMMENDED ATTACHMENTS

LIFT HOOK	44,092 lbs
TEREX® FUCHS CACTUS GRAB 1.0 yd³	Open or half-closed tines
TEREX® FUCHS CACTUS GRAB 1.3 yd³	Open or half-closed tines
TEREX® FUCHS CACTUS GRAB 1.6 yd³	Open or half-closed tines
TEREX® FUCHS CACTUS GRAB 1.8 yd³	Open or half-closed tines
CLAMSHELL GRAB 1.8 yd³	Loose goods density up to 3,540 lb/yd³
CLAMSHELL GRAB 2.1 yd³	Loose goods density up to 3,034 lb/yd³
CLAMSHELL GRAB 2.6 m³	Loose goods density up to 2,023 lb/yd³

Capacity values are stated in (lbs). The pump pressure is 5,221 psi. The values, in accordance with ISO 10567, amount to 75% of the static tipping load or 87% of the hydraulic lifting force (marked *). They apply to slewing operations through 360° on a firm and level surface. Values in brackets apply to the longitudinal direction of the undercarriage. "Non-supported" values only apply when the load is hoisted above the front or rear axle. The weight of the attached hoisting equipment (grab, magnet, coupler, lift hook etc.) must be deducted from the capacity values. In accordance with CE guidelines, hose-rupture protection valves on the lift cylinders and an overload warning device are required for crane operations.

WORKING RANGES/LIFTING CAPACITIES MHL380 D



**Reach 68.9 ft
cranked boom**

Work equipment:
Cranked boom 37.2 ft;
Stick 29.3 ft;
Cactus grab

HEIGHT ft	UNDERCARRIAGE STABILIZERS	REACH ft											
		15	20	25	30	35	40	45	50	55	60	65	
60	non supported						(18,440*)	(13,180*)					
	4-pt. supported						18,440* (18,440*)	13,180* (13,180*)					
55	non supported							(17,110)	(13,090*)				
	4-pt. supported							17,340* (17,340*)	13,090* (13,090*)				
50	non supported							(16,980*)	(14,120)	(11,450)			
	4-pt. supported							16,980* (16,980*)	16,290* (16,290*)	11,740* (11,740*)			
45	non supported							(16,930*)	(14,220)	(11,660)			
	4-pt. supported							16,930* (16,930*)	16,150* (16,150*)	15,520* (15,520*)			
40	non supported							(17,130*)	(14,150)	(11,670)	(9,620)		
	4-pt. supported							17,130* (17,130*)	16,240* (16,240*)	15,500* (15,500*)	13,800* (13,800*)		
35	non supported							(16,940)	(13,940)	(11,550)	(9,600)		
	4-pt. supported							17,550* (17,550*)	16,520* (16,520*)	15,650* (15,650*)	14,900* (14,900*)		
30	non supported							(19,650*)	(16,470)	(13,600)	(11,330)	(9,470)	(7,900)
	4-pt. supported							19,650* (19,650*)	18,180* (18,180*)	16,960* (16,960*)	15,930* (15,930*)	15,050* (15,050*)	12,730* (12,730*)
25	non supported						(23,040*)	(19,400)	(15,870)	(13,160)	(11,020)	(9,270)	(7,800)
	4-pt. supported						23,040* (23,040*)	20,780* (20,780*)	18,980* (18,980*)	17,520* (17,520*)	16,310* (16,310*)	15,120* (15,120*)	13,070* (14,390*)
20	non supported				(28,820*)	(22,820)	(18,420)	(15,160)	(12,640)	(10,650)	(9,020)	(7,650)	
	4-pt. supported				28,820* (28,820*)	24,920* (24,920*)	22,070* (22,070*)	19,890* (19,890*)	18,160* (18,160*)	16,750 (16,750*)	14,860 (15,560*)	12,910 (14,530*)	
15	non supported		(48,580)	(35,000)	(26,780)	(21,280)	(17,350)	(14,390)	(12,090)	(10,250)	(8,730)	(7,470)	
	4-pt. supported		52,890* (52,890*)	39,520* (39,520*)	31,870* (31,870*)	26,910* (26,910*)	23,430* (23,430*)	20,830* (20,830*)	18,820* (18,820*)	16,790 (17,210*)	14,560 (15,860*)	12,720 (14,780*)	
10	non supported		(28,840*)	(31,270)	(24,470)	(19,750)	(16,280)	(13,620)	(11,530)	(9,840)	(8,450)	(7,280)	
	4-pt. supported		28,840* (28,840*)	44,130* (44,130*)	34,730* (34,730*)	28,800* (28,800*)	24,730* (24,730*)	21,740* (21,740*)	18,950 (19,460*)	16,360 (17,640*)	14,260 (16,120*)	12,530 (14,780*)	
5	non supported		(17,270*)	(28,320)	(22,490)	(18,370)	(15,290)	(12,910)	(11,000)	(9,460)	(8,180)	(7,110)	
	4-pt. supported		17,270* (17,270*)	39,810* (39,810*)	36,990* (36,990*)	30,380* (30,380*)	25,390* (25,390*)	21,440 (22,530*)	18,390 (20,000*)	15,950 (17,990*)	13,980 (16,310*)	12,340 (14,810*)	
0	non supported	(9,100*)	(15,860*)	(26,420)	(21,020)	(17,270)	(14,470)	(12,290)	(10,550)	(9,120)	(7,940)	(6,960)	
	4-pt. supported	9,100* (9,100*)	15,860* (15,860*)	28,930* (28,930*)	36,570 (38,380*)	29,480 (31,460*)	24,500 (26,630*)	20,780 (23,090*)	17,900 (20,380*)	15,600 (18,200*)	13,730 (16,370*)	12,190 (14,710*)	
-5	non supported	(11,680*)	(16,770*)	(25,390)	(20,070)	(16,470)	(13,840)	(11,800)	(10,180)	(8,850)	(7,760)	(6,860)	
	4-pt. supported	11,680* (11,680*)	16,770* (16,770*)	26,190* (26,190*)	35,490 (38,810*)	28,610 (31,940*)	23,820 (27,030*)	20,260 (23,370*)	17,510 (20,530*)	15,320 (18,220*)	13,540 (16,250*)	12,090 (14,380*)	
-10	non supported	(14,130*)	(18,390*)	(24,960)	(19,540)	(15,980)	(13,420)	(11,460)	(9,920)	(8,670)	(7,650)	(6,840)	
	4-pt. supported	14,130* (14,130*)	18,390* (18,390*)	26,000* (26,000*)	34,900 (38,320*)	28,060 (31,760*)	23,360 (26,950*)	19,900 (23,280*)	17,230 (20,370*)	15,130 (17,970*)	13,430 (15,850*)	12,060 (13,710*)	
-15	non supported		(20,200*)	(24,930)	(19,350)	(15,740)	(13,190)	(11,280)	(9,800)	(8,590)	(7,640)		
	4-pt. supported		20,200* (20,200*)	26,850* (26,850*)	34,690 (36,940*)	27,810 (30,900*)	23,110 (26,320*)	19,700 (22,740*)	17,090 (19,840*)	15,040 (17,350*)	13,410 (15,050*)		
-20	non supported			(25,200)	(19,430)	(15,730)	(13,150)	(11,240)	(9,770)	(8,630)	(7,740)		
	4-pt. supported			28,210* (28,210*)	34,670* (34,670*)	27,800* (29,290*)	23,070 (25,080*)	19,660* (21,670*)	17,080* (18,800*)	15,080* (16,230*)	13,520* (13,520*)		
-25	non supported				(19,740)	(15,930)	(13,290)	(11,360)	(9,910)	(8,800)			
	4-pt. supported				31,440* (31,440*)	26,850* (26,850*)	23,090* (23,090*)	19,790* (19,790*)	17,090* (17,090*)	14,360* (14,360*)			

RECOMMENDED ATTACHMENTS

LIFT HOOK	44,092 lbs
TEREX® FUCHS CACTUS GRAB 1.0 yd³	Open or half-closed tines
TEREX® FUCHS CACTUS GRAB 1.3 yd³	Open or half-closed tines
TEREX® FUCHS CACTUS GRAB 1.6 yd³	Open or half-closed tines
TEREX® FUCHS CACTUS GRAB 1.8 yd³	Open or half-closed tines
CLAMSHELL GRAB 1.8 yd³	Loose goods density up to 3,877 lb/yd³
CLAMSHELL GRAB 2.1 yd³	Loose goods density up to 3,203 lb/yd³
CLAMSHELL GRAB 2.6 m³	Loose goods density up to 2,360 lb/yd³

Capacity values are stated in (lbs). The pump pressure is 5,221 psi. The values, in accordance with ISO 10567, amount to 75% of the static tipping load or 87% of the hydraulic lifting force (marked *). They apply to slewing operations through 360° on a firm and level surface. Values in brackets apply to the longitudinal direction of the undercarriage. “Non-supported” values only apply when the load is hoisted above the front or rear axle. The weight of the attached hoisting equipment (grab, magnet, coupler, lift hook etc.) must be deducted from the capacity values. In accordance with CE guidelines, hose-rupture protection valves on the lift cylinders and an overload warning device are required for crane operations.

Terex Construction Americas
8800 Rostin Road
Southaven, MS 38671 - USA

Tel.: (662) 393-1800 Fax: (662) 393-1700
Web: www.terex.com



**PURPOSE
BUILT**

MHL380 D.
Tailored to specific job site requirements.

Mobile, flexible, powerful: the MHL380 D is the ideal loading machine for the diverse requirements of modern port logistics. The powerful dual circuit hydraulics and solid structure enable it to maneuver both quickly and precisely even with heavy loads. A range of attachments ensures maximum flexibility in use.

In the cab, which can be elevated smoothly to a maximum eye-level of 20 ft above ground and moved forward by up to 7 ft, the operator maintains an optimal view of the working environment, especially helpful during the loading and unloading of barges and vessels along inland waterways and at seaports. Whether from ship to ship or between ship and storage site, hopper or railway car: the responsive controls and strong swing torque enable fast, precise working cycles. With these outstanding characteristics the MHL380 D is the answer to improving operating efficiency and job site productivity.

HIGH PERFORMANCE AND VERSATILITY - A WINNING COMBINATION.

Effective date: April 2009. Product specifications and prices are subject to change without notice or obligation. The photographs and/or drawings in this document are for illustrative purposes only. Refer to the appropriate Operator's Manual for instructions on the proper use of this equipment. Failure to follow the appropriate Operator's Manual when using our equipment or to otherwise act irresponsibly may result in serious injury or death. The only warranty applicable to our equipment is the standard written warranty applicable to the particular product and sale and Terex makes no other warranty, express or implied. Products and services listed may be trademarks, service marks or trade-names of Terex Corporation and/or its subsidiaries in the USA and other countries. All rights are reserved. Terex is a registered trademark of Terex Corporation in the USA and many other countries. Copyright © 2009 Terex Corporation.